



**HAMPSHIRE  
FOREST  
PARTNERSHIP**  
*a legacy in leaves*

# Hampshire Forest Partnership Team



**Emily Roberts**  
Senior Project Manager



**Liz Keeling**  
Project Officer



**Sarah Pocock**  
Project Officer

# Hampshire Forest Partnership

- 🌿 Background
- 🌿 Aims and approach
- 🌿 Tree and Hedge Tracker
- 🌿 Funding available to partners:
  - 🌿 Shoots Along The Routes
  - 🌿 Disease resistant elm trees
  - 🌿 Community Orchards
  - 🌿 Mini Forests





2019

Climate  
Emergency  
declared

2020

Hampshire  
Tree  
Strategy

2022

Hampshire  
Forest  
Partnership





# Aims of the Hampshire Forest Partnership

**Encourage**  
tree planting  
across  
Hampshire

Provide  
**advice and  
guidance** on  
*planting the right  
trees in the right  
places*

**Share**  
positive ways  
tree planting  
helps the  
environment

Give our  
community  
**what is  
needed** to  
get involved in  
tree planting  
activities

# Strategic Priorities for our projects

1. Public benefit, amenity value and wellbeing
2. Climate change mitigation and resilience
3. Local nature recovery
4. Landscape character, cultural and heritage development
5. Learning, awareness, and educational opportunities
6. Sustainable development of the rural economy





# Hampshire Forest Partnership

A group of community groups, charities, businesses, and public bodies working with Hampshire land managers to deliver tree planting, support biodiversity and boost health and wellbeing.

Pooling resources  
and engaging with  
communities to  
create 'ownership'



Encourage ongoing  
maintenance and  
aftercare of trees  
planted



Successful and  
resilient tree  
planting projects

# Our partners







# Funding Sources

- ♥ 2021: Initial funding to create HFP from Invest in Hampshire
- ♥ 2022: £150,000 Forestry Commission grant from the Woodland Creation Accelerator Fund
- ♥ 2023: £100,000 Defra grant from the Coronation Living Heritage Fund for Community Orchards and Mini Forests
- ♥ ~£25,000 Partner contributions towards their tree planting projects





# Right Tree, Right Place

... and Right People, Right Place

Rural



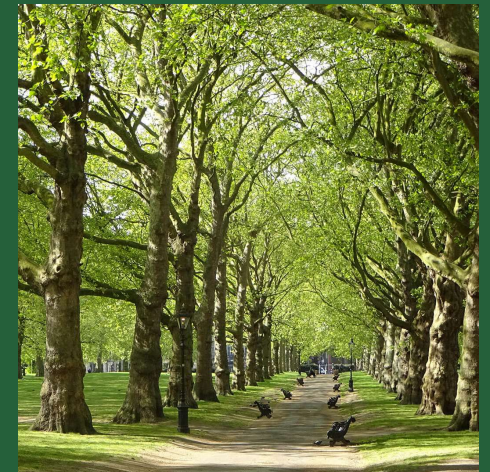
Economic



Urban



Public amenity



# Hampshire Forest Partnership Tree and Hedge Funds

Shoots Along the Routes

Community Orchards

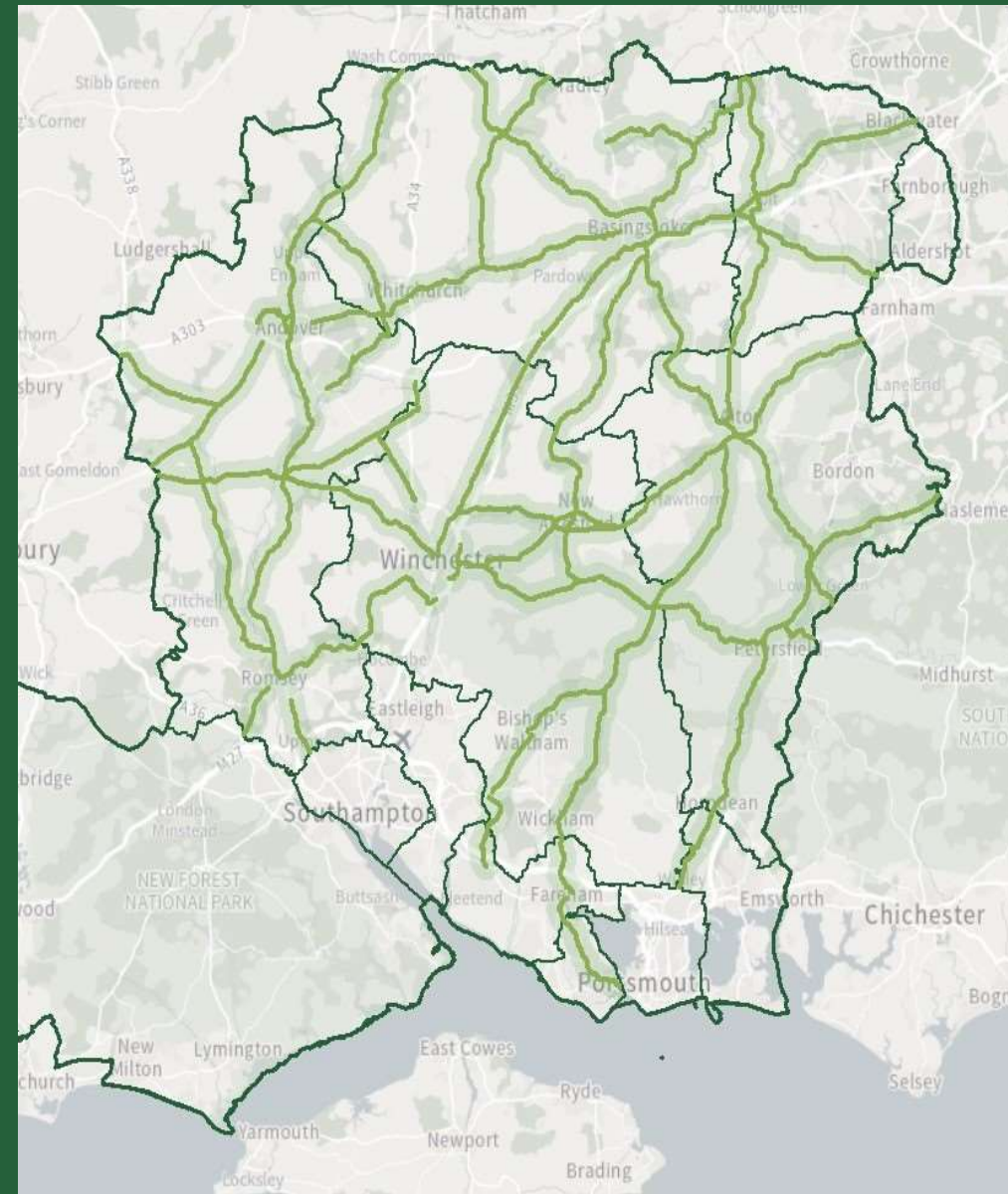
Mini Forests

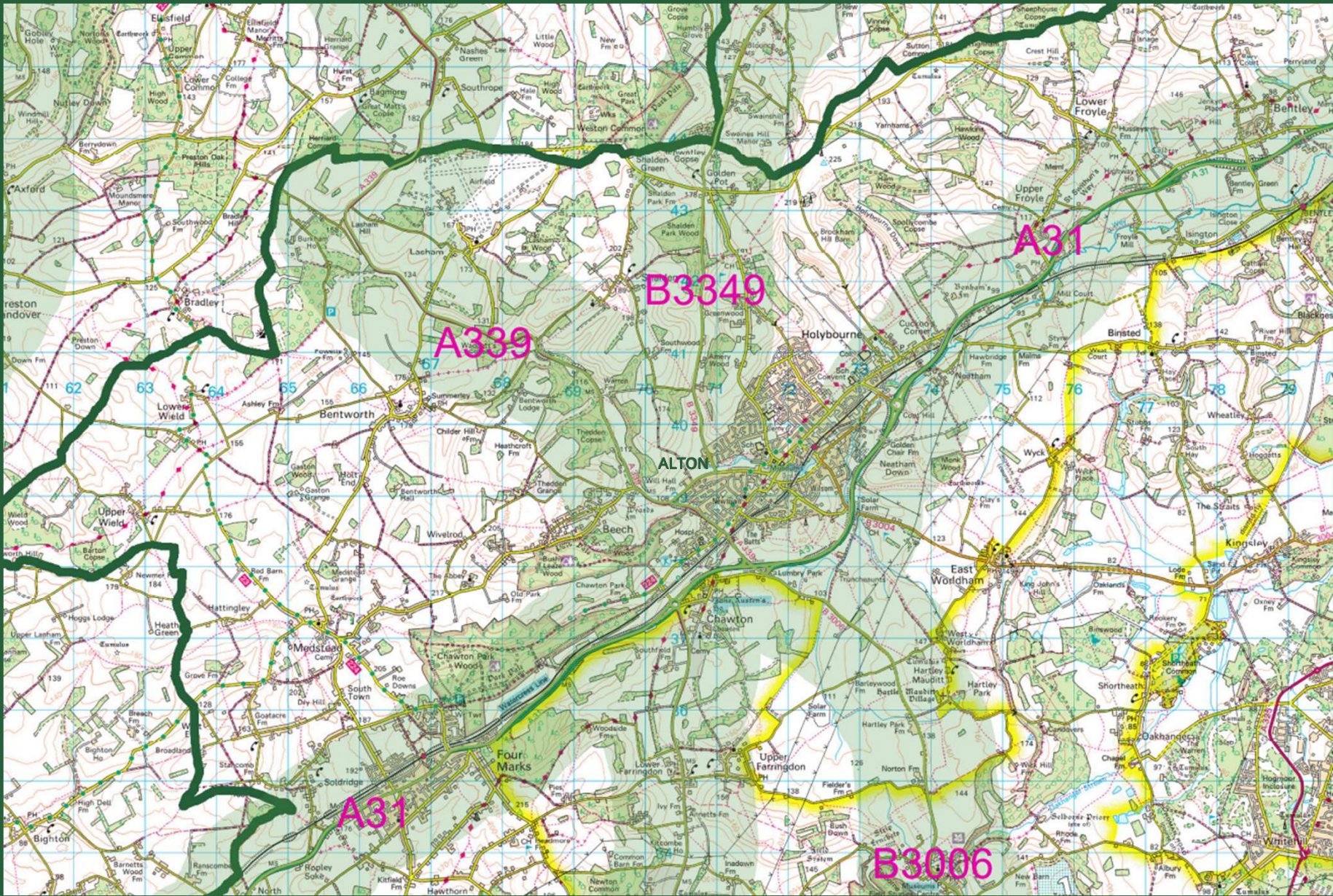
Disease-resistant elms



# Shoots Along the Routes

- Supports tree planting in up to **2km wide strips** (1 km either side of roads) following Hampshire roads
- Roads strategically selected for:
  - Ecosystem services
  - Local nature recovery
- Creating up to **630km** of green corridors across Hampshire





# From this...

Existing hedge

Existing woodland

A272

A272

SINC

Town

Village



**...to this...**

NEW linear woodland

NEW trees along existing hedge

1 km

NEW 'living barn' for livestock

NEW hedge linking existing woodlands



A272

A272

SINC

NEW tree circle

Town

NEW mini forest

1 km

NEW hedge linking woodland with SINC

NEW community orchard

NEW hedge linking towns to villages

Village

**...or this!**

NEW wood pasture



NEW riparian woodland planted with a NEW hedge linking to an existing woodland

Existing woodland

1 km

B3047

River

B3047

NEW linear woodland linking existing woodland with NEW agroforestry system

NEW silvoarable agroforestry system

NEW tree cluster

1 km

Farringdon



# Ecosystem services

Green corridors  
enhance  
biodiversity

Reduce flood  
risk

River cooling  
and shading for  
wildlife

Support  
agroforestry

Improve areas  
visual amenity

Reduce noise and air  
pollution from roads

Air cooling and  
heat reflection

Reduce road run-  
off of pollutants  
into rivers

Improve  
soil health

Improve  
mental health  
and wellbeing

# Community Orchards

- DEFRA Funding from King's Coronation Living Heritage Fund
- Orchard = 5 or more fruit and nut trees planted in one area
- Community led and managed schemes
- Planted in publicly accessible areas (incl. allotments and schools) near to communities



# Benefits of Community Orchards



Improve community wellbeing and increase outdoor activities.



Create a focal points for community activities and learning



Important habitat for a range of wildlife.

# Mini Forests

- Also known as a Miyawaki Forest after the Japanese botanist Prof Miyawaki who designed the method in the 1970s
- Miyawaki wanted to help rapidly restore native forests and increase biodiversity on degraded land
- Planting is based on the concept of natural regeneration
- Results in resilient and thriving woodlands that grow in 20-30 rather than 150-200 years
- Natural selection favours the strongest and fastest growing trees
- Fast-growing, multi-layered, densely planted woodlands in areas as small as a tennis court (200m<sup>2</sup>)



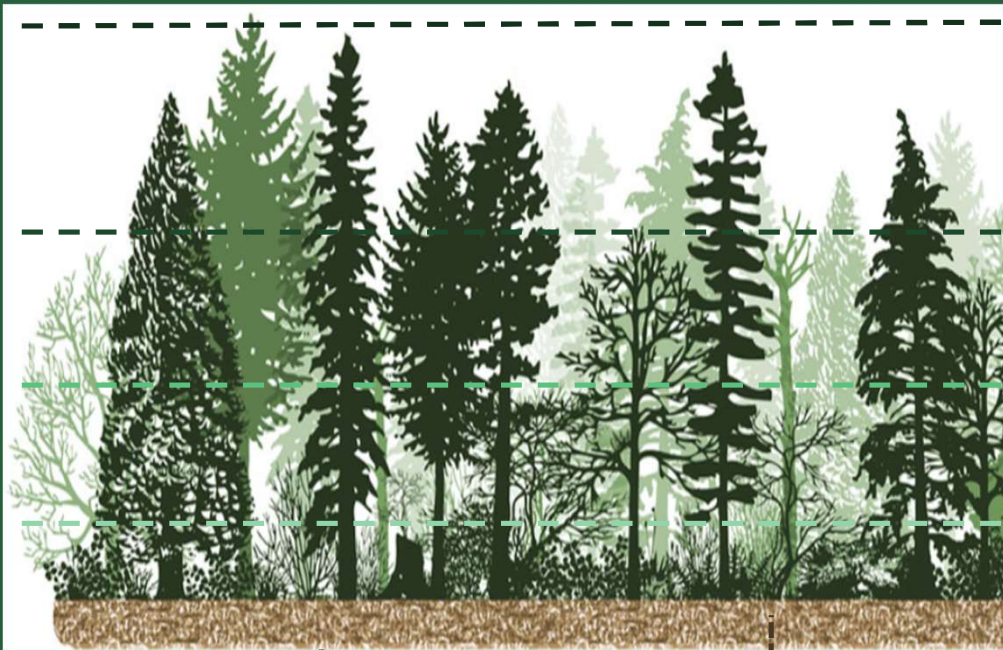
# How to create a Mini Forest



Source: Stepping Stones Forests, Ireland

- Perform a site survey to identify the native tree species growing on site which are best suited to on-site conditions
- Decide on the tree species that will make up the canopy and tree layer of the mini forests then select 'companion' understorey and herb species based on compatibility
- Prepare the site by enhancing with soil improvers like compost, manure and straw
- Plant locally sourced and bio secure whips randomly over the site at a density of 3-5 per m<sup>2</sup>
- Apply a locally sourced mulch to help to retain moisture in the soil and prohibit other plants from growing and competing with your trees.
- In the first two to three years water the trees regularly, keep the site weed free and apply more mulch when required.

# Native forest layers in Hampshire



- Canopy:**
- Aspen
  - Hornbeam
  - Pedunculate oak
  - Sessile oak
  - Silver birch
  - Downy birch
  - Beech
  - Black poplar
  - Sycamore
  - Alder
  - Sycamore
  - Scots pine

- Tree:**
- Filed Maple
  - Goat willow
  - Grey willow
  - Rowan
  - Small-leaved lime
  - Whitebeam
  - Wild cherry
  - Bird cherry
  - Holly

- Understorey:**
- Hawthorn
  - Crab apple
  - Elder
  - Hazel
  - Osier willow

- Herbaceous:**
- Blackthorn
  - Dog rose
  - Guelder rose
  - Spindle
  - Dogwood

- Underground rhizosphere:**
- Tree and plant roots
  - Fungi mycelium
  - Rhizomes, bulbs & tubers

- Ground:**
- Leaf litter
  - Decaying wood
  - Lichens & mosses





## Benefits of mini forests

Creates learning opportunities

Cools the air in urban areas

Higher survival rate

Greens urban and semi-urban areas

Reduces flood risk

Low maintenance requirement after 2-3 years

Encourages public engagement in environmental issues

Improves air quality

Increases urban biodiversity

Dense canopy sequesters and stores high amount of carbon



# Bringing Miyawaki forests to Hampshire

- Community Mini Forest Project launched in 2023 to help build community partnerships for planting mini forests
- Priority given to project that will provide local environmental and social benefits
- Perfect locations for a mini forest include...

country parks



recreation grounds



schools or colleges





# Disease Resistant Elms

- Dutch elm disease killed 60 millions elm trees in UK since it arrived in 1920's
- Ash was often planted as a replacement tree
- Disease resistant hybrid elms – crossbred from British and Asiatic elm trees



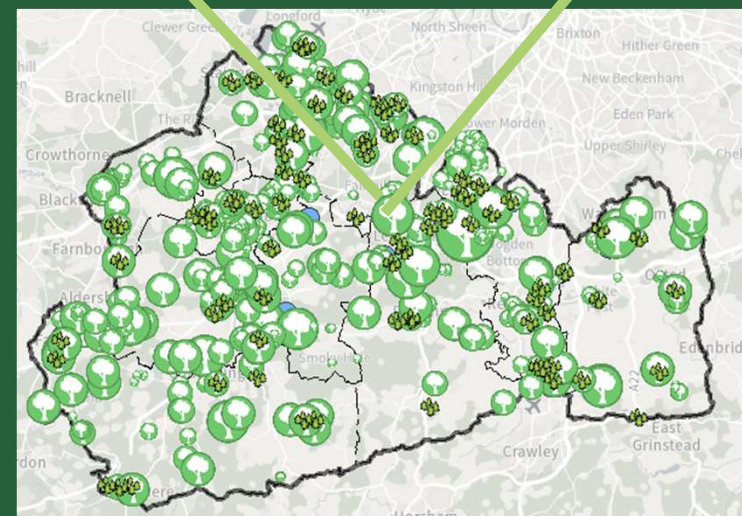
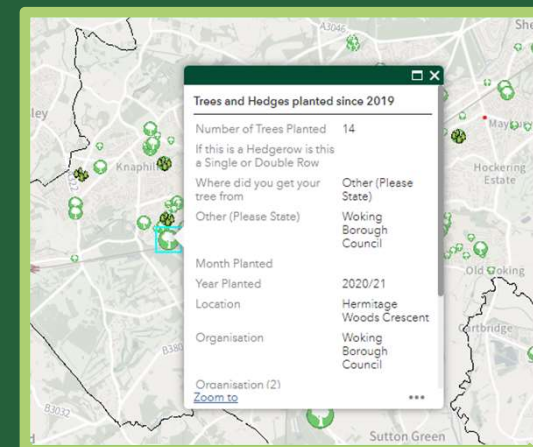
# Tree & Hedge Tracker

New online map going live soon! Map will show trees and hedges planted in Hampshire since Nov. 2020.

Also include location; numbers of tree/hedges planted; tree species; planting date; and who planted the trees.

Interactive public map - anyone can add Hampshire tree and hedge planting.

Strategic tool – used to track the one million trees by 2050 goal; and to see where more trees are needed.



# Tree & Hedge Tracker survey Links


Tree Tracker

Hedge Tracker



Hampshire Forest Partnership - a legacy in leaves

**HAMPSHIRE FOREST PARTNERSHIP**  
*a legacy in leaves*



Tell us about the trees you've planted and together help us reach the goal of planting one million trees in Hampshire by 2050.

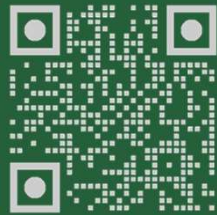
**Information about the processing & protection of your personal data**  
If you are completing this form on behalf of someone else, please make sure they have given you permission. Click here for our [Privacy Statement](#)

**Date trees were planted?\***  
If planting a group of trees over several days/weeks, insert date the last tree was planted.

**Approximately how many trees were planted?\***  
Whether you planted one, or a group of trees, how many in total were planted?

[www.hants.gov.uk/HampshireForestPartnership](http://www.hants.gov.uk/HampshireForestPartnership)

[TreePlanting@hants.gov.uk](mailto:TreePlanting@hants.gov.uk)



Any Questions?

